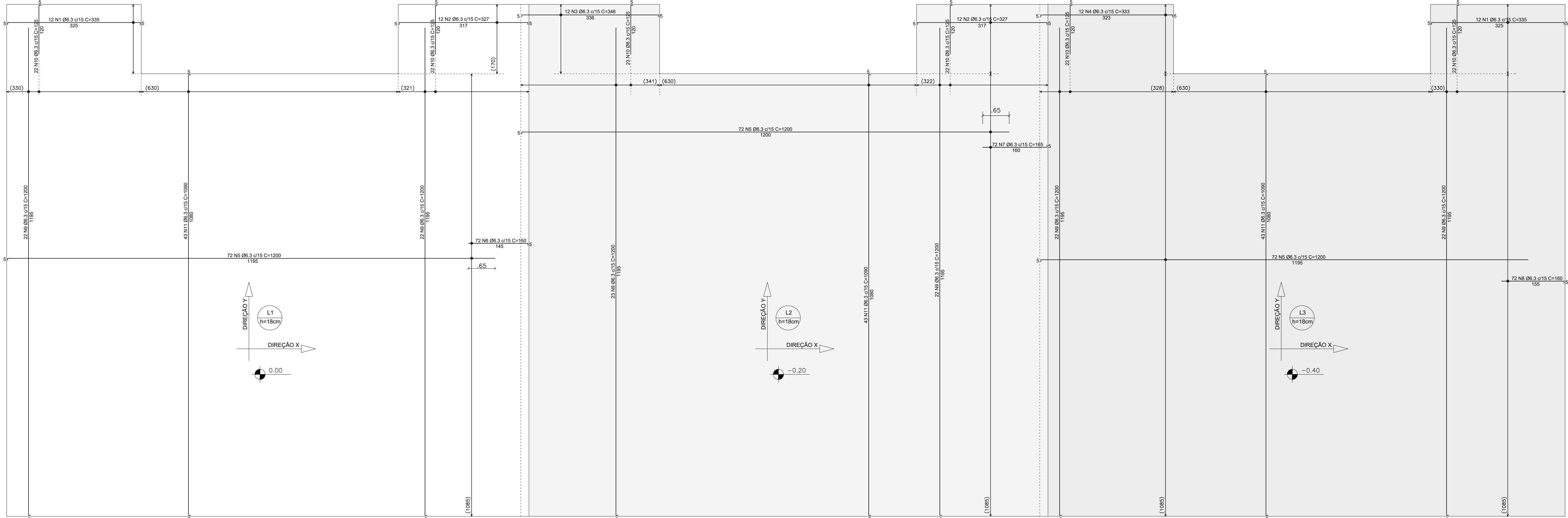
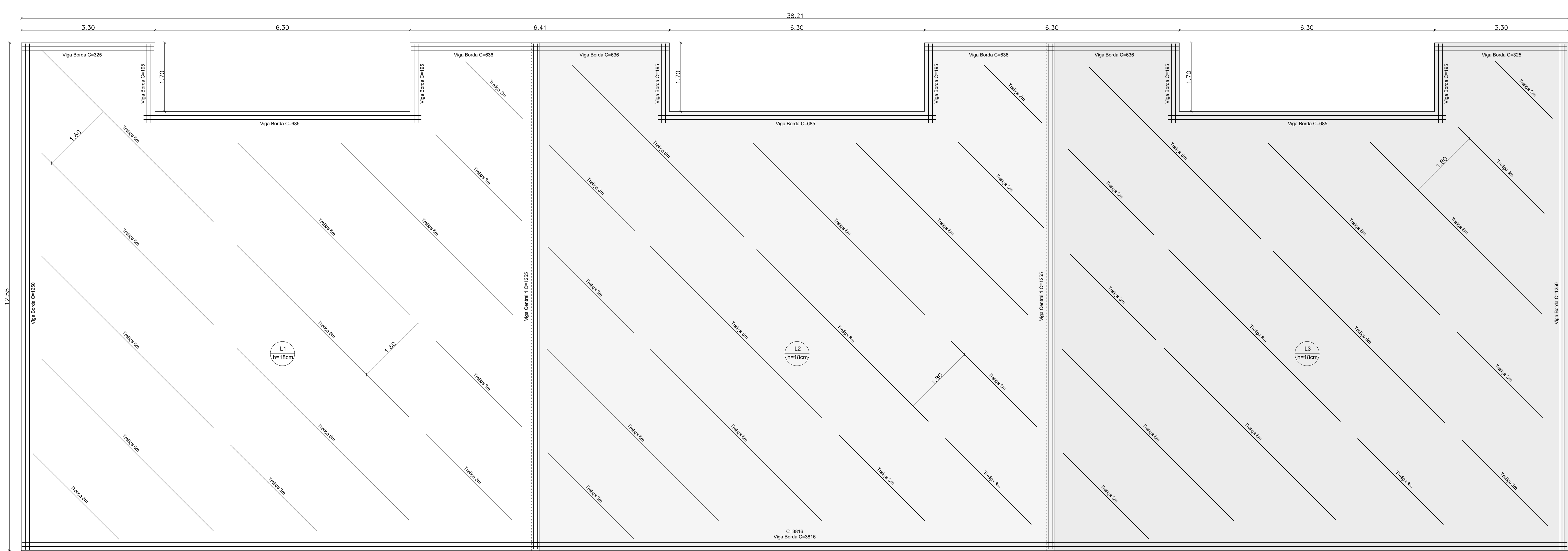


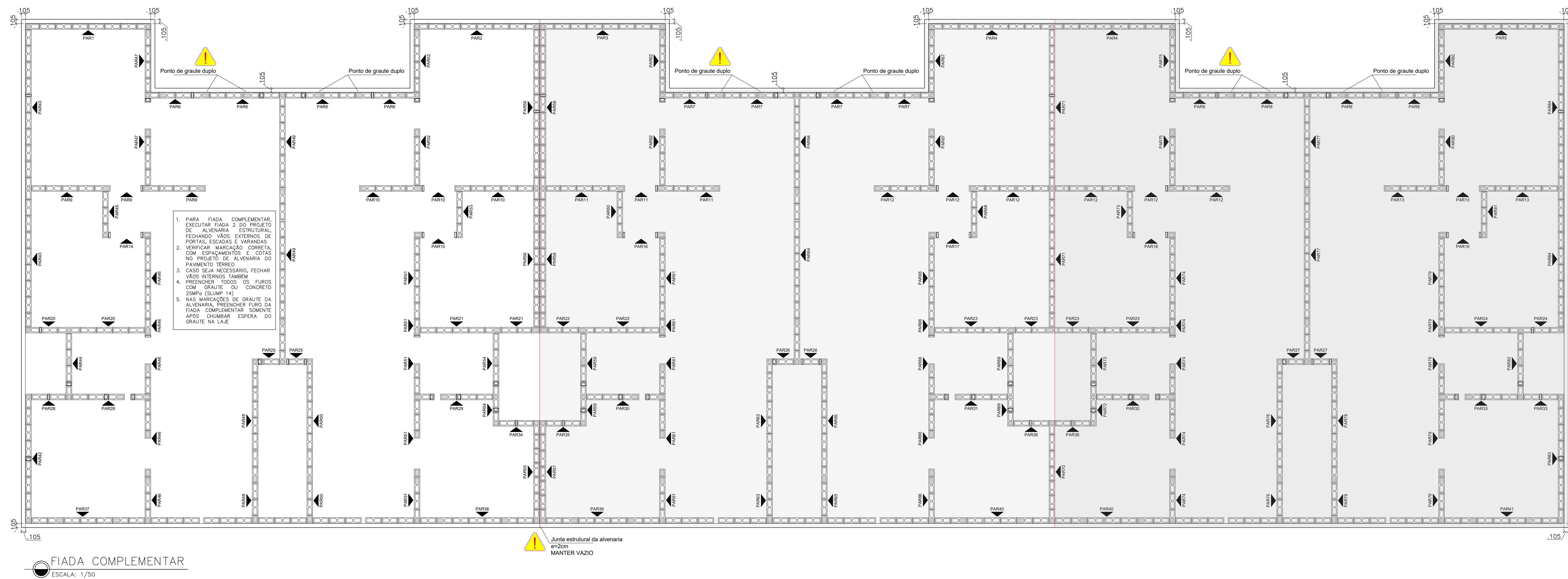
ARMADURA POSITIVA  
ESCALA: 1/50



ARMADURA NEGATIVA  
ESCALA: 1/50

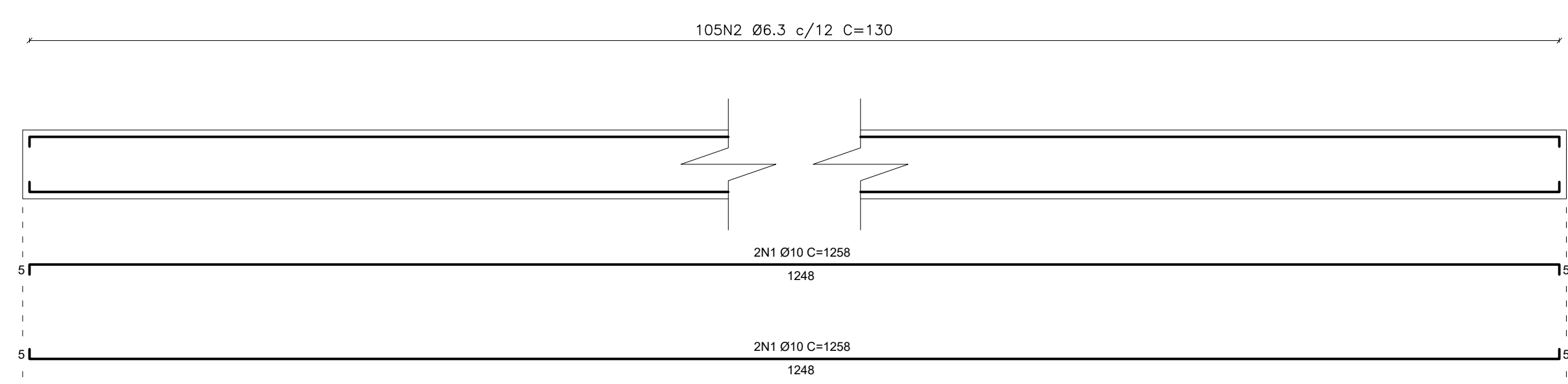


ARMADURAS DE BORDA E DE POSICIONAMENTO  
ESCALA: 1/50

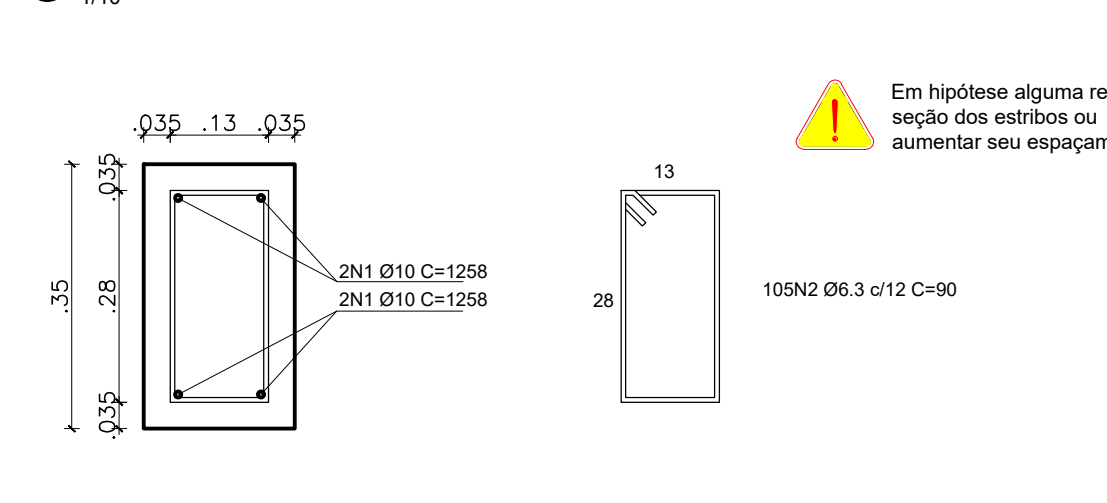


FIADA COMPLEMENTAR  
ESCALA: 1/50

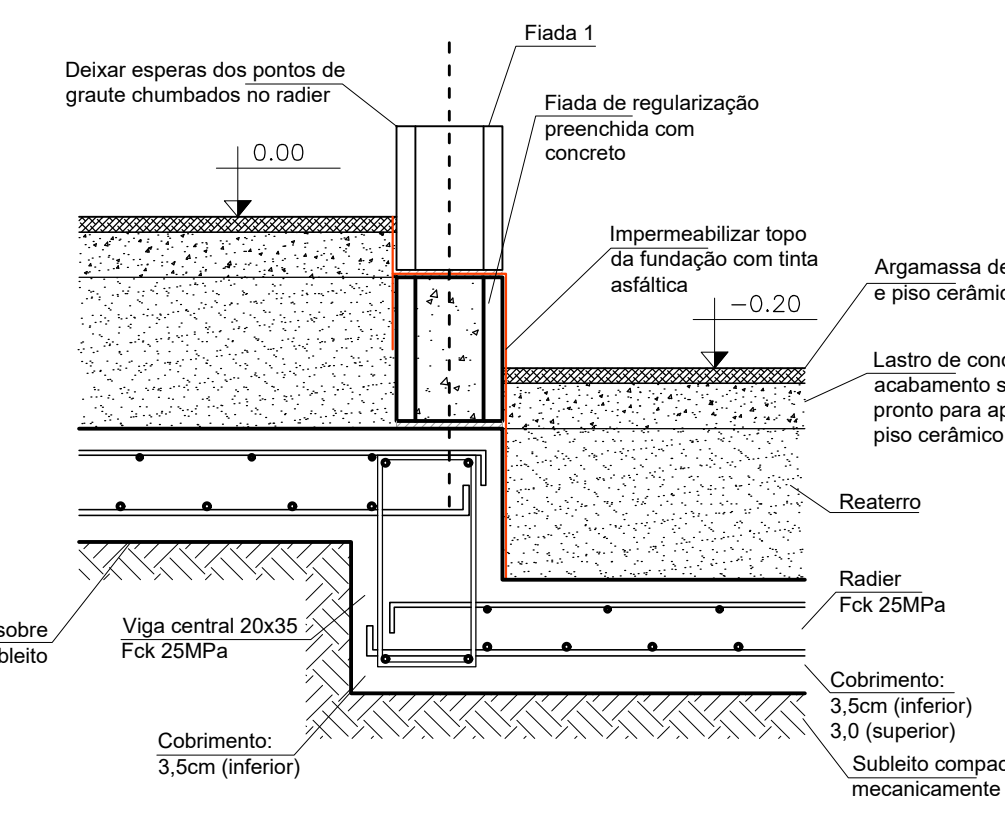
Vigas Centrais - SEÇÃO LONGITUDINAL 1-25



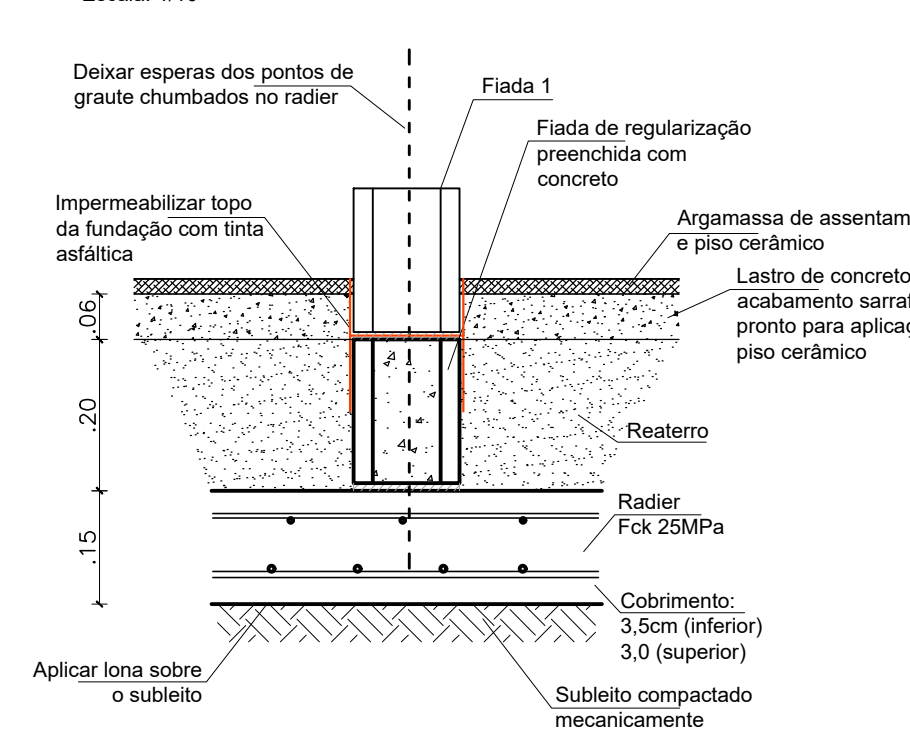
Viga Central - SEÇÃO TRANSVERSAL



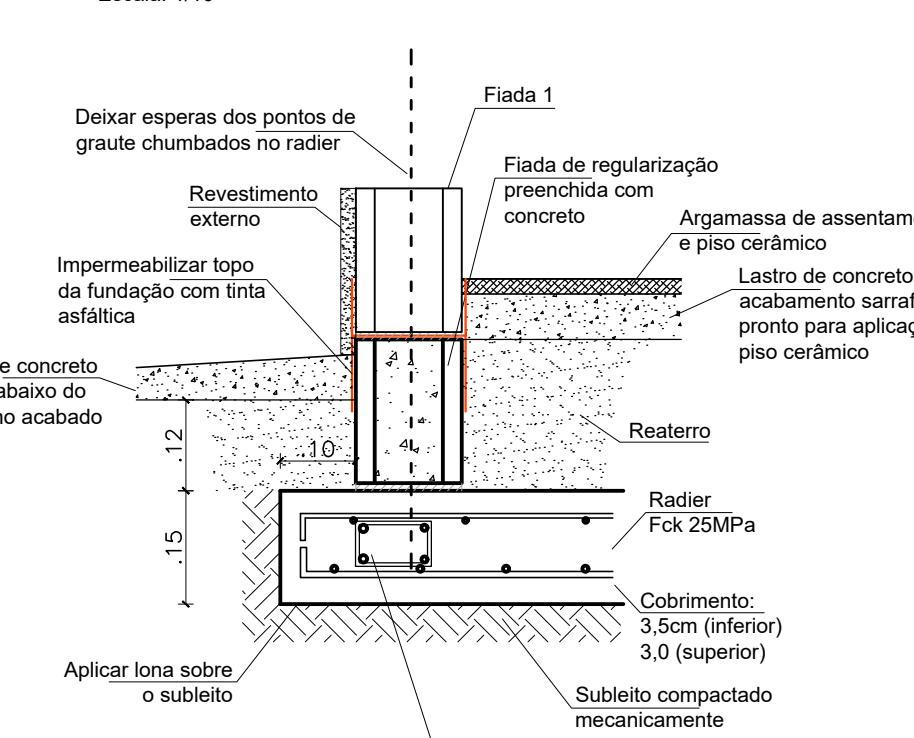
Viga Central - DESNÍVEL



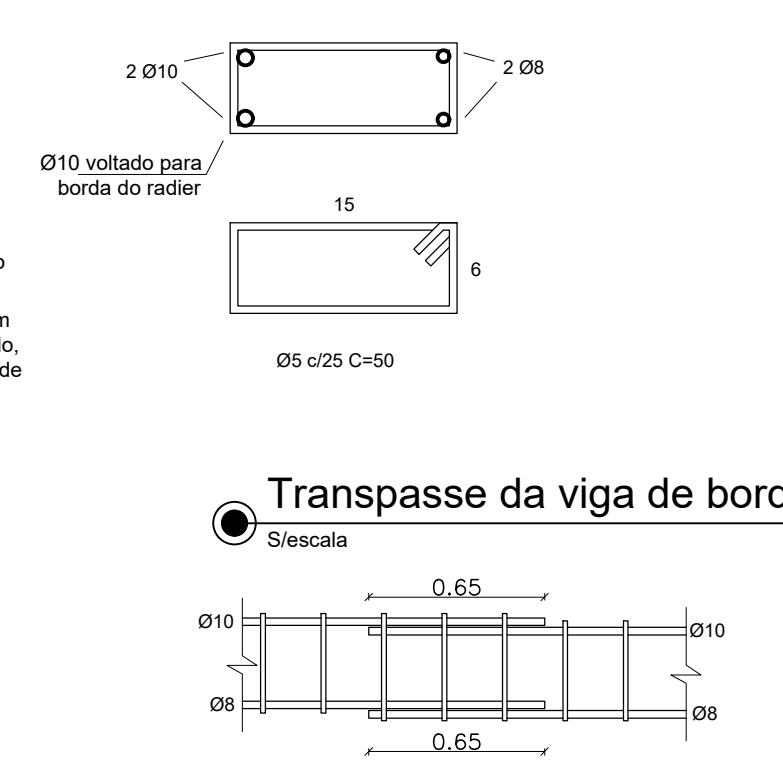
Parede interna



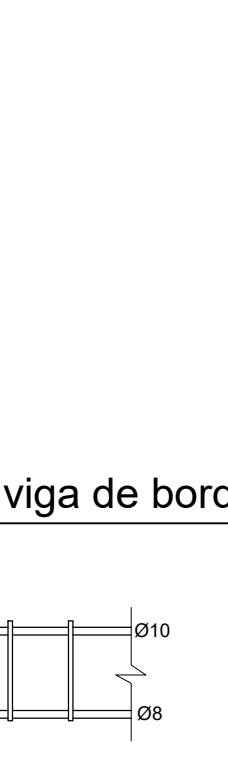
Parede externa



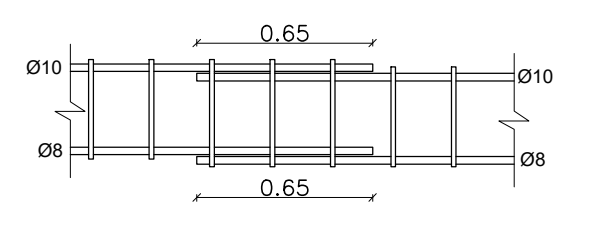
Viga de borda



Ponto de graute duplo



Transpasse da viga de borda



ARMADURA POSITIVA RADIER				
NOME	DIÁMETRO	QUANTIDADE	UNIDADE	TOTAL (kg)
N1	8	32	kg	896
N2	8	32	kg	896
N3	8	32	kg	896
N4	8	32	kg	896
N5	8	32	kg	896
N6	8	32	kg	896
N7	8	32	kg	896
N8	8	32	kg	896
N9	8	32	kg	896
N10	8	32	kg	896
N11	8	32	kg	896
N12	8	32	kg	896
N13	8	32	kg	896
ARMADURA NEGATIVA RADIER				
NOME	DIÁMETRO	QUANTIDADE	UNIDADE	TOTAL (kg)
N14	8	32	kg	896
N15	8	32	kg	896
N16	8	32	kg	896
N17	8	32	kg	896
N18	8	32	kg	896
N19	8	32	kg	896
N20	8	32	kg	896
N21	8	32	kg	896
N22	8	32	kg	896
N23	8	32	kg	896
N24	8	32	kg	896
N25	8	32	kg	896
N26	8	32	kg	896
N27	8	32	kg	896
N28	8	32	kg	896
N29	8	32	kg	896
N30	8	32	kg	896
N31	8	32	kg	896
N32	8	32	kg	896
VIGA BORDA				
NOME	DIÁMETRO	QUANTIDADE	UNIDADE	TOTAL (kg)
N1	8	2	kg	228
N2	8	2	kg	228
N3	8	2	kg	228
N4	8	2	kg	228
N5	8	2	kg	228
N6	8	2	kg	228
N7	8	2	kg	228
N8	8	2	kg	228
N9	8	2	kg	228
N10	8	2	kg	228
N11	8	2	kg	228
N12	8	2	kg	228
N13	8	2	kg	228
N14	8	2	kg	228
N15	8	2	kg	228
N16	8	2	kg	228
N17	8	2	kg	228
N18	8	2	kg	228
N19	8	2	kg	228
N20	8	2	kg	228
N21	8	2	kg	228
N22	8	2	kg	228
N23	8	2	kg	228
N24	8	2	kg	228
N25	8	2	kg	228
N26	8	2	kg	228
N27	8	2	kg	228
N28	8	2	kg	228
N29	8	2	kg	228
N30	8	2	kg	228
N31	8	2	kg	228
N32	8	2	kg	228
VIGAS CENTRAIS				
NOME	DIÁMETRO	QUANTIDADE	UNIDADE	TOTAL (kg)
N1	8	2	kg	228
N2	8	2	kg	228
N3	8	2	kg	228
N4	8	2	kg	228
N5	8	2	kg	228
N6	8	2	kg	228
N7	8	2	kg	228
N8	8	2	kg	228
N9	8	2	kg	228
N10	8	2	kg	228
N11	8	2	kg	228
N12	8	2	kg	228
N13	8	2	kg	228
N14	8	2	kg	228
N15	8	2	kg	228
N16	8	2	kg	228
N17	8	2	kg	228
N18	8	2	kg	228
N19	8	2	kg	228
N20	8	2	kg	228
N21	8	2	kg	228
N22	8	2	kg	228
N23	8	2	kg	228
N24	8	2	kg	228
N25	8	2	kg	228
N26	8	2	kg	228
N27	8	2	kg	228
N28	8	2	kg	228
N29	8	2	kg	228
N30	8	2	kg	228
N31	8	2	kg	228
N32	8	2	kg	228
ESPERAS DOS PONTOS DE GAUCHO				
NOME	DIÁMETRO	QUANTIDADE	UNIDADE	TOTAL (kg)
N1	8	75	210	1890
RESUMO DO AÇO				
TIPO	MASSAGEM	QUANTIDADE	UNIDADE	TOTAL (kg)
CA-50	8	8.625	234,64	2016,38
CA-60	10	50,4	205,15	1025,70
CA-60	8	118,6	463,48	2349,18
TOTAL DE AÇO				
TIPO	MASSAGEM <td>QUANTIDADE<td>UNIDADE<td>TOTAL (kg)</td></td></td>	QUANTIDADE <td>UNIDADE<td>TOTAL (kg)</td></td>	UNIDADE <td>TOTAL (kg)</td>	TOTAL (kg)
CA-50	8	8.625	234,64	2016,38
CA-60	65	65	71,0	4235,00